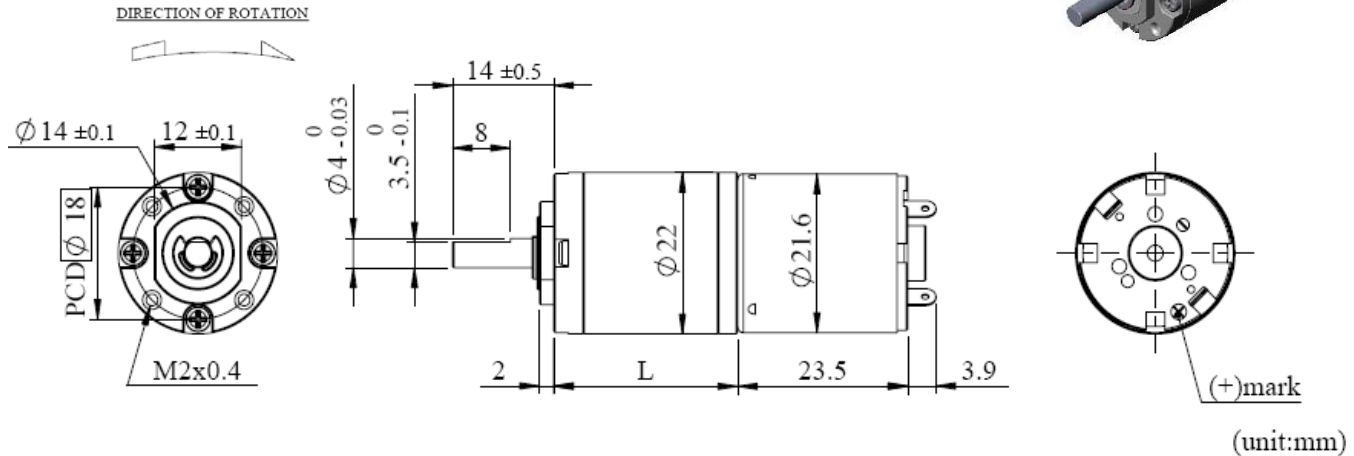




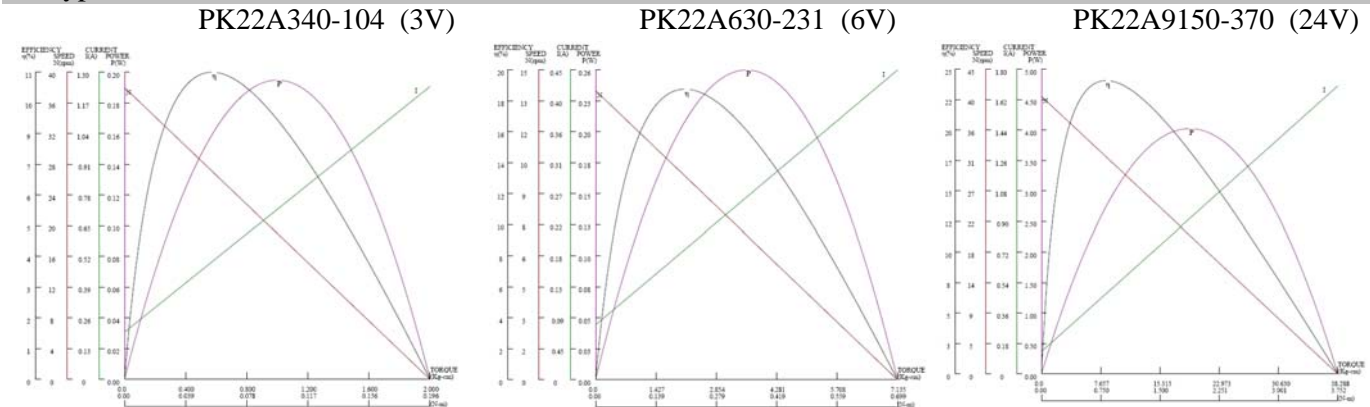
PK22A Series of DC Planetary Gear Motor



Appearance Dimension:



Typical Performance Curves:



Specifications of Standard DC Gear Motor :

Model	Rated Voltage	Reduction Ratio	1/4	1/16	1/19	1/62	1/104	1/231	1/316	1/370	1/455
0340	3V	Rated Torque (kg-cm)	0.02	0.09	0.10	0.30	0.50	0.90	1.25	1.45	1.80
		Rated Speed (rpm)	750	186	157	48	28	13	9.5	8.0	6.6
		Rated Current (mA)	460	460	460	460	460	460	460	460	460
0630	6V	Rated Torque (kg-cm)	0.05	0.17	0.20	0.55	0.90	1.70	2.30	2.70	3.40
		Rated Speed (rpm)	600	150	126	38	23	10	7.60	6.50	5.20
		Rated Current (mA)	170	170	170	170	170	170	170	170	170
9150	24V	Rated Torque (kg-cm)	0.12	0.40	0.50	1.35	2.30	4.20	5.50	5.50	5.50
		Rated Speed (rpm)	3000	750	630	193	115	52	39	34	28
		Rated Current (mA)	420	420	420	420	420	420	390	240	213

Specifications of Gearbox :

Reduction Ratio	1/4	1/16	1/19	1/62	1/104	1/231	1/316	1/370	1/455
Gearbox Length (L)	14.2	18.0	18.0	21.6	21.6	25.4	25.4	25.4	25.4
Rated Torque (kg-cm)	1	3	3	4	4	6	6	6	6
Max.Momentary Torque (kg-cm)	3	9	9	12	12	18	18	18	18
Efficiency (%)	80	70	70	60	60	50	50	50	50
Radial Play of Shaft (mm)	0.05	0.05	0.05	0.05	0.05	0.05	0.05	0.05	0.05
Thrust Play of Shaft (mm)	0.20	0.20	0.20	0.20	0.20	0.20	0.20	0.20	0.20
Output Shaft Axial Load (kg)	1.00	1.00	1.00	1.00	1.00	1.00	1.00	1.00	1.00
Output Shaft Radial Load (kg)	1.50	1.50	1.50	1.50	1.50	1.50	1.50	1.50	1.50

Notes:

1. The specifications may change or update without notice since the product improvement.
2. The customized specifications or install magnetic encoder would be available.