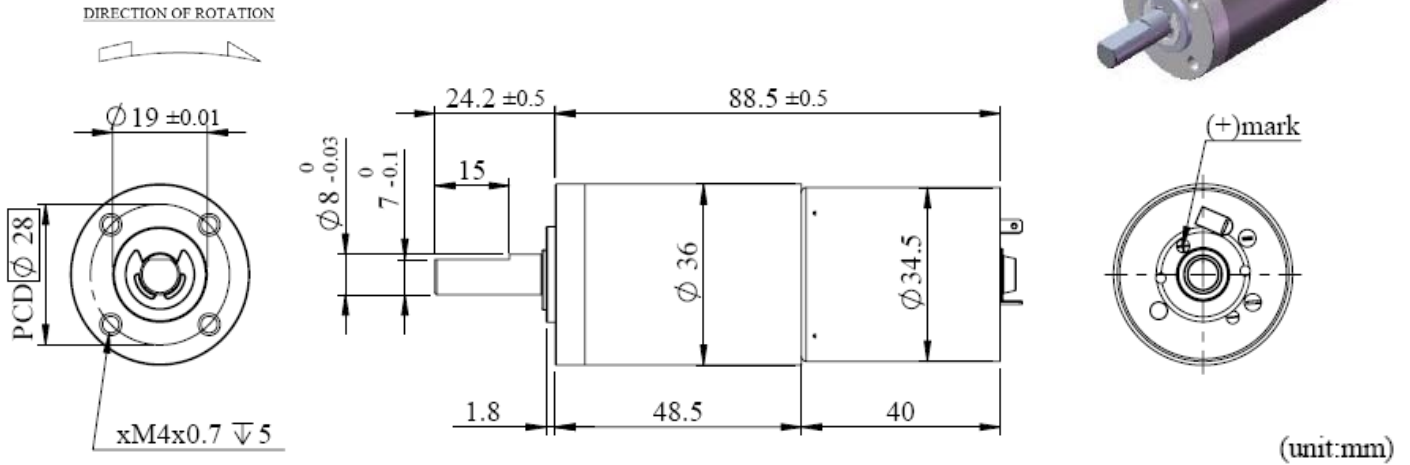




PK36F Series of DC Planetary Gear Motor



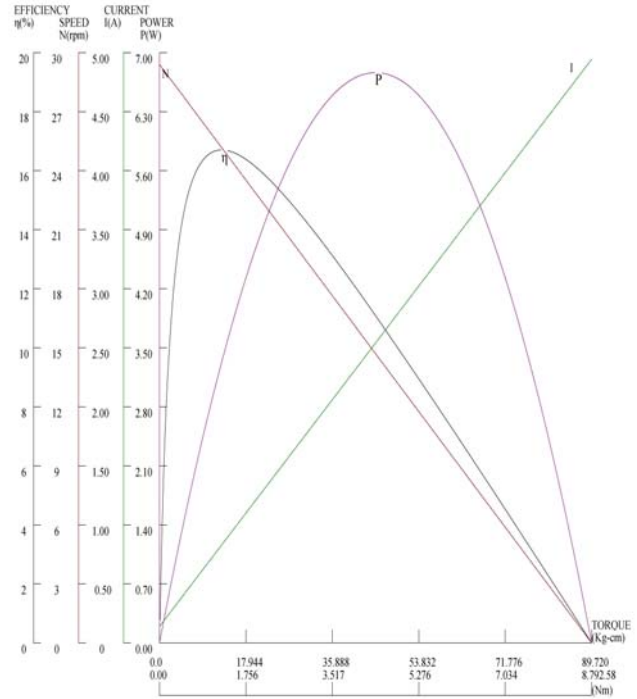
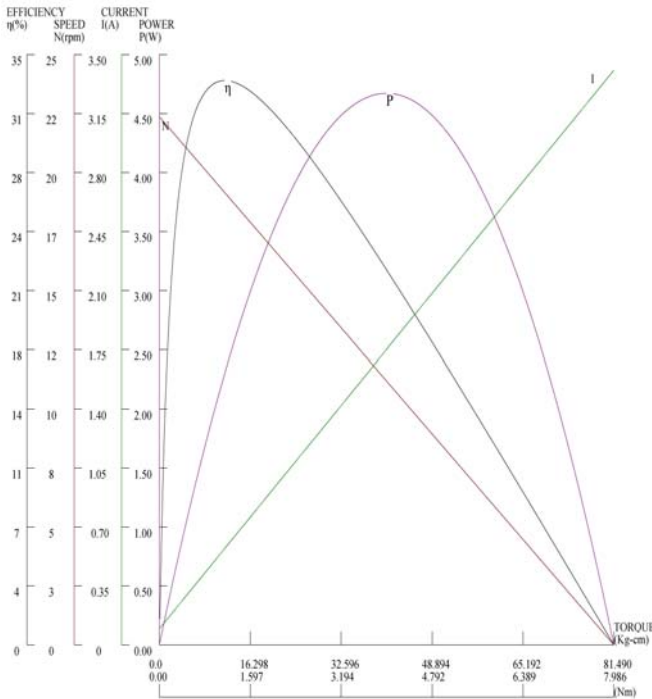
Appearance Dimensions:



Typical Performance Curves :

PK36F260-272 (12V)

PK36F980-272 (24V)



Specifications of Standard DC Gear Motor :

Model	Rated Voltage	Reduction Ratio	1/272
0260	12V	No Load Speed(rpm)	22
		No Load Current (mA)	100
		Rated Torque (kg-cm)	12.00
		Rated Speed (rpm)	18.5
		Rated Current (mA)	600
0980	24V	No Load Speed(rpm)	29
		No Load Current (mA)	140
		Rated Torque (kg-cm)	12.00
		Rated Speed (rpm)	25
		Rated Current (mA)	780

Specifications of Gearbox :

Gearbox Type	Planetary
Gear Material	Mixed
Reduction Ratio	1/272
Gearbox Length (L)	48.50
Rated Torque (kg-cm)	25.00
Max.Momentary Torque (kg-cm)	75.00
Efficiency (%)	50.00
Radial Play of Shaft (mm)	0.04
Thrust Play of Shaft (mm)	0.30
Output Shaft Axial Load (kg)	3.00
Output Shaft Radial Load (kg)	8.00

Notes:

1. The specifications may change or update without notice since the product improvement.
2. The customized specifications or install magnetic encoder would be available.