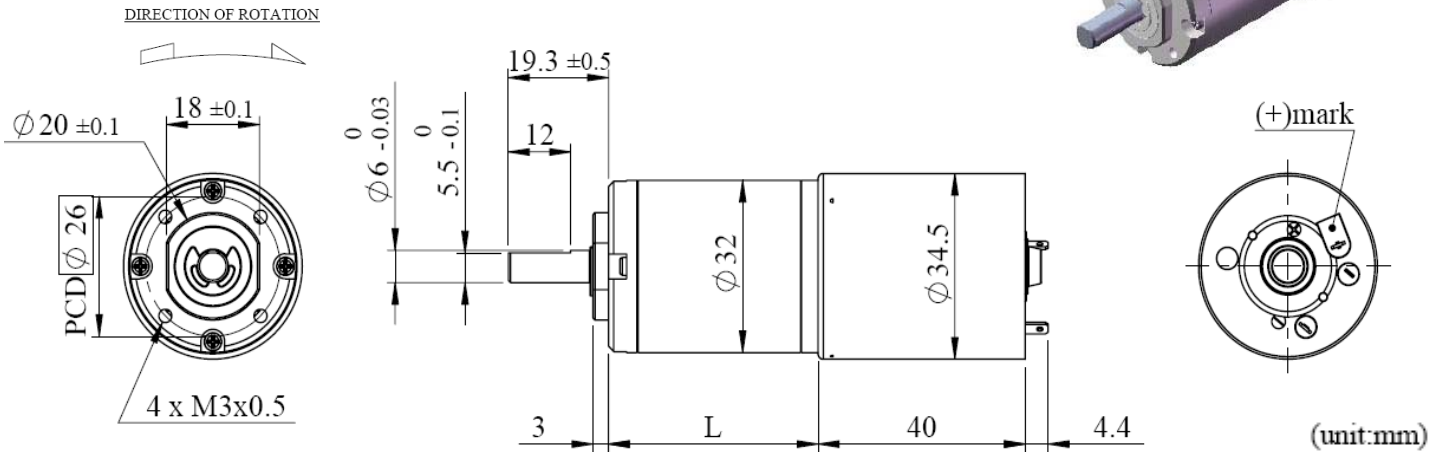




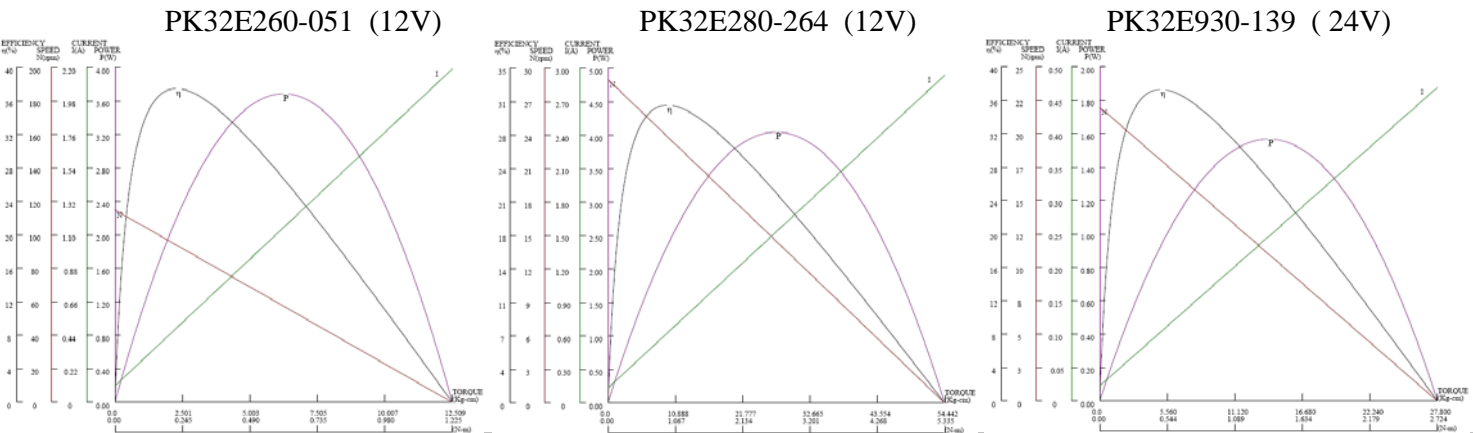
# PK32E Series of DC Planetary Gear Motor



## Appearance Dimensions:



## Typical Performance Curves :



## Specifications of Standard DC Gear Motor :

Model	Rated Voltage	Reduction Ratio	1/14	1/19	1/27	1/51	1/71	1/100	1/139	1/189	1/264	1/516	1/721
0260	12V	Rated Torque (kg-cm)	0.60	0.80	1.20	2.00	2.70	3.80	5.30	6.00	7.50	7.50	7.50
		Rated Speed (rpm)	350	255	180	96	69	49	35	25	19	10	7.5
		Rated Current (mA)	435	435	435	435	435	435	435	435	435	390	240
0280	12V	Rated Torque (kg-cm)	0.60	0.80	1.20	2.00	2.70	3.80	5.30	6.00	7.50	7.50	7.50
		Rated Speed (rpm)	480	355	250	135	95	68	48	35	26	14	8
		Rated Current (mA)	570	570	570	570	570	570	570	570	570	520	170
0930	24V	Rated Torque (kg-cm)	0.49	0.67	0.95	1.50	2.10	3.00	4.17	4.70	6.60	7.50	7.50
		Rated Speed (rpm)	185	136	96	50	36	26	18	13	9.5	5.0	4.0
		Rated Current (mA)	90	90	90	90	90	90	90	90	90	90	60

## Specifications of Gearbox :

Reduction Ratio	1/14	1/19	1/27	1/51	1/71	1/100	1/139	1/189	1/264	1/516	1/721
Gearbox Length (L)	27.2	27.2	27.2	33.7	33.7	33.7	33.7	40.5	40.5	40.5	40.5
Rated Torque (kg-cm)	6	6	6	8	8	10	10	12	12	15	15
Max.Momentary Torque (kg-cm)	18	18	18	24	24	30	30	36	36	45	45
Efficiency (%)	70	70	70	60	60	60	60	50	50	50	50
Radial Play of Shaft (mm)	0.05	0.05	0.05	0.05	0.05	0.05	0.05	0.05	0.05	0.05	0.05
Thrust Play of Shaft (mm)	0.30	0.30	0.30	0.30	0.30	0.30	0.30	0.30	0.30	0.30	0.30
Output Shaft Axial Load (kg)	2.50	2.50	2.50	2.50	2.50	2.50	2.50	2.50	2.50	2.50	2.50
Output Shaft Radial Load (kg)	3.50	3.50	3.50	3.50	3.50	3.50	3.50	3.50	3.50	3.50	3.50

## Notes:

1. The specifications may change or update without notice since the product improvement.
2. The customized specifications or install magnetic encoder would be available.