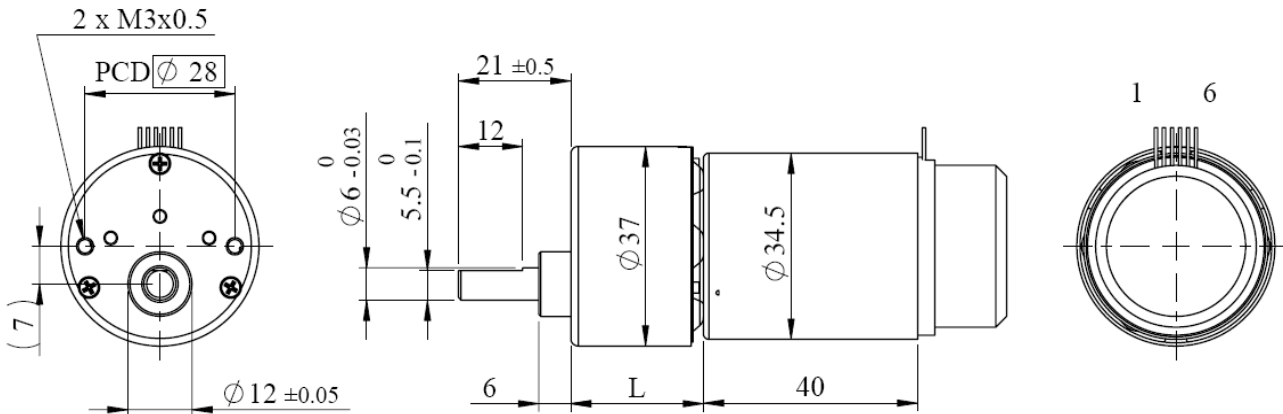




# HE372E Series of DC Gear Motor with Magnetic Encoder



## Appearance Dimensions:



(unit: mm)

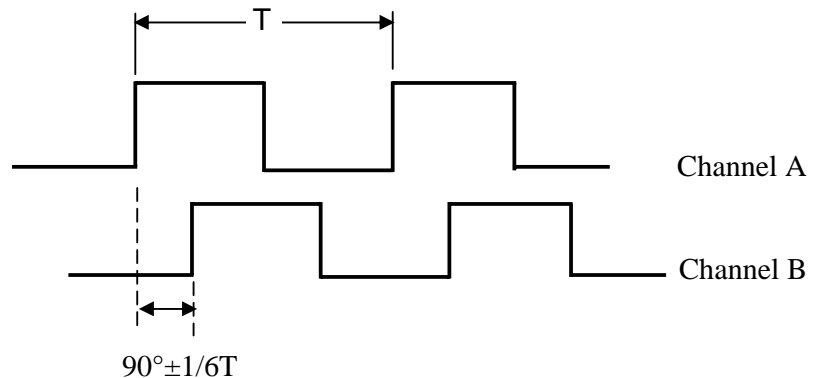
1	BLACK	Motor -
2	RED	Motor +
3	black	Ground
4	green	Channel B
5	white	Channel A
6	red	Sensor Voltage +

## Specifications of Standard DC Gear Motor :

Model	Rated Voltage	Reduction Ratio	1/10	1/31	1/52	1/94	1/156	1/281	1/468	1/842
			0260	12V	Rated Torque (kg-cm)	0.50	1.40	2.15	3.90	6.00
Rated Speed (rpm)	495	160			96	50	32	19	12	6.50
Rated Current (mA)	433	433			433	433	415	260	195	140
0960	24V	Rated Torque (kg-cm)	0.55	1.60	2.40	4.40	6.00	6.00	6.00	6.00
		Rated Speed (rpm)	535	170	100	57	35	21	12	7
		Rated Current (mA)	240	240	240	240	220	140	110	80

## Specifications of Hall Effect Encoder:

Power Source	5~24 VDC
Current Consumption	30mA (Max.)
Response Frequency	20KHz
Output Mode	With pull up resistor
Output Signal	A & B
Operating Temperature	0°C ~ +70°C
Storage Temperature	-20°C ~ +90°C
Humidity	85% RH (Max.)
Resolution	4 P/R , 12 P/R



## Notes:

1. The specification may be amended or updated without noticing since the product improvement.
2. It's available to customize the specification.
3. The gear ratios 1/10 and 1/31 are belong to HE37E Series.